

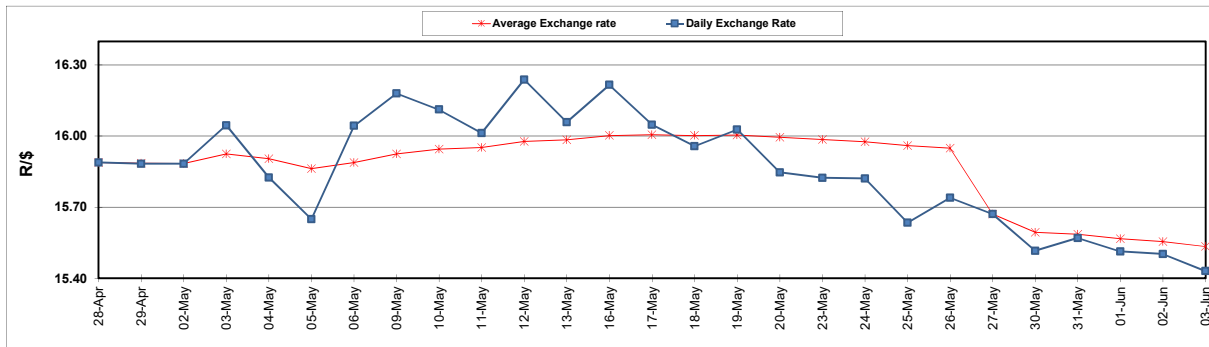
	PETROL 95 ULP	PETROL 93 ULP & LRP	DIESEL 0.05%	DIESEL 0.005%	ILL. PAR.
GAUTENG PUMP PRICE (SA c/l) AS FROM 01/06/2022	2,417.000	2,394.000	-	-	-
WHOLESALE PRICE (SA c/l) AS FROM 01/06/2022	-	-	2,309.440	2,322.840	1,820.288
SINGLE NATIONAL MAXIMUM RETAIL PRICE	-	-	-	-	2,402.000
BASIC FUEL PRICE - 03/06/2022 (SA c/l)	1,637.783	1,598.868	1,683.742	1,696.723	1,697.648
PRESS RELEASE CONTRIBUTION TO BFP 01/06/2022 - 03/06/2022 (SA c/l)	1,507.410	1,484.410	1,607.630	1,621.030	1,602.128
UNIT OVER/(UNDER) RECOVERY - 03/06/2022 (SA c/l)	(130.373)	(114.458)	(76.112)	(75.693)	(95.520)
AVERAGE BASIC FUEL PRICE 27/05/2022 - 03/06/2022	1,633.037	1,591.294	1,637.845	1,650.985	1,650.286
AVERAGE UNIT OVER/(UNDER) RECOVERY 27/05/2022 - 03/06/2022	(247.127)	(228.384)	(85.215)	(83.455)	(126.158)

ANALYSIS MOVEMENT OF AVERAGE OVER/(UNDER) RECOVERY

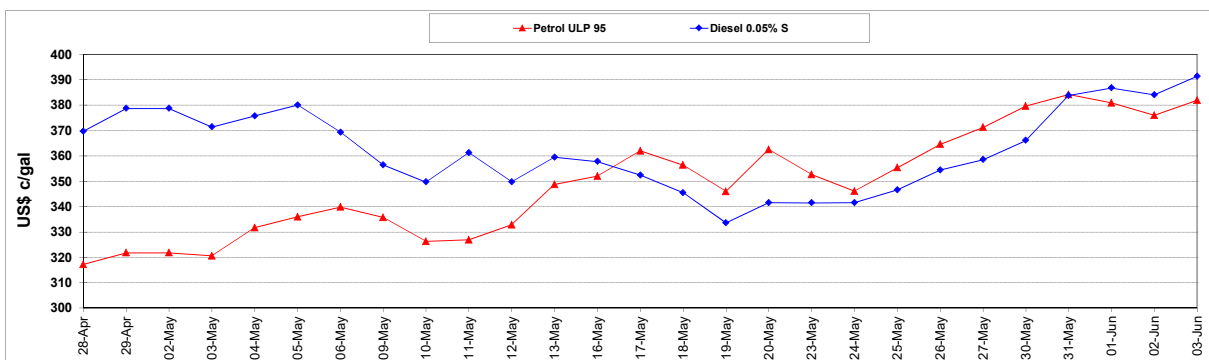
	PETROL 95	PETROL 93	DIESEL 0.05%	DIESEL 0.005%	ILL. PAR.
- MOVEMENT IN INTERNATIONAL PRODUCT PRICES	(290.787)	(270.928)	(129.003)	(127.594)	(170.279)
- MOVEMENT IN EXCHANGE RATE	43.660	42.544	43.788	44.139	44.121
AVERAGE UNIT OVER/(UNDER) RECOVERY 27/05/2022 - 03/06/2022	(247.127)	(228.384)	(85.215)	(83.455)	(126.158)

R/\$ EXCHANGE RATE - (R/\$15.4300 - 03/06/2022)

EXCHANGE RATE USED IN BASIC FUEL PRICE



INTERNATIONAL PRODUCT PRICES OF BASKET USED IN BASIC FUEL PRICE



BASIC FUEL PRICE IN SA CENTS PER LITRE

